

Addit, Ihr verlässiger Partner für komplexe und anspruchsvolle Projekte

Market segment:

Internal and External Infrastructure

Addit has taken part in construction and optimization process of the housing for a new generation of **airport security scanners**.

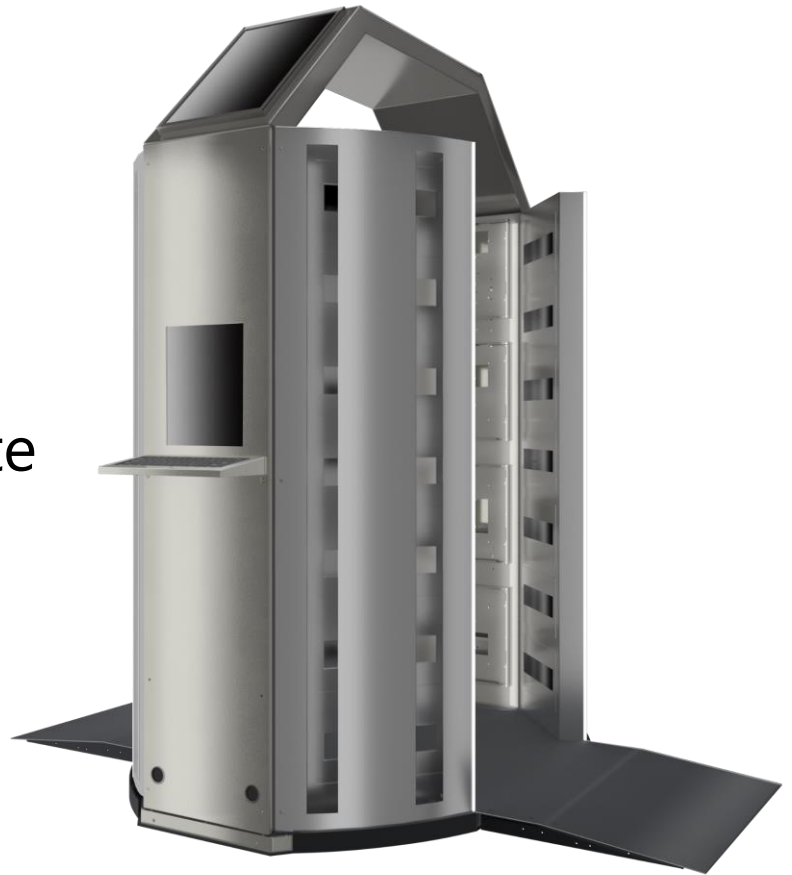
What makes the project unique is that it uses AI to detect prohibited objects. You do not have to remove shoes or clothing to be scanned, you just walk through the device, and this is it – it significantly shortens the time needed at the security check point.

Our involvement in the project began with the delivery of the floor. This particular part of the scanner has strict requirements regarding flatness, resistance to deformation under load, and weight.

To meet our customer's requirements, after analyzing the device parameters, we proposed a completely new solution, which was to ensure repeatable quality at lower production costs.

Our engineers performed FEM analysis to check the stresses and deflections of the material. As a result of our analyses, we offered two new solutions for the floor.

The customer decided to order and test both versions as prototypes



After the production and delivery of both prototypes, the customer conducted real-life tests of the proposed solutions. Fatigue tests performed by the customer showed that our proposed solutions resulting from our FEM calculations were 99,5% confirmed in real-life conditions.

Based on our experience during the production of two versions of prototypes and tests carried out by the customer, together with the customer, we determined that the final version of the floor supplied by us will be a combination of solutions from both the first and second version - this created the solution customer was waiting for.

The second stage of the project was to produce the housing for the scanner according to the customer's documentation and to supply all sheet metal parts for the scanners – which we also did successfully.

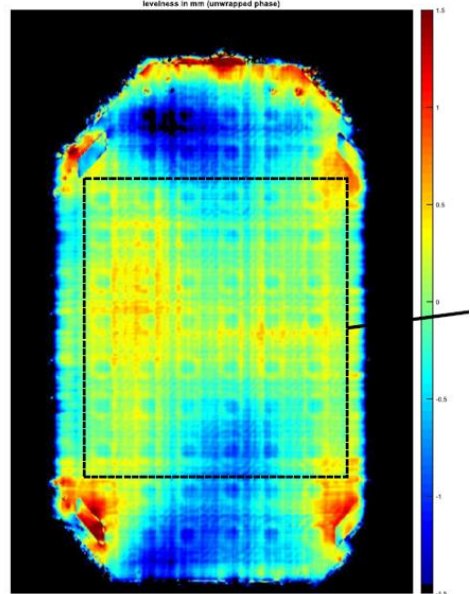
Addit, your reliable partner for complex and demanding projects

Scope of the project

By the manufacturing of airport security scanners Addit was responsible for:

- FEM calculations
- Detailed engineering
- Creation of documentation
- Prototyping
- Managing the supply chain
- Production of sheet metal elements, surface finishing and machining
- Mechanical assembly of modules
- Serial production

Levelness in mm



Reflectivity in dB

